

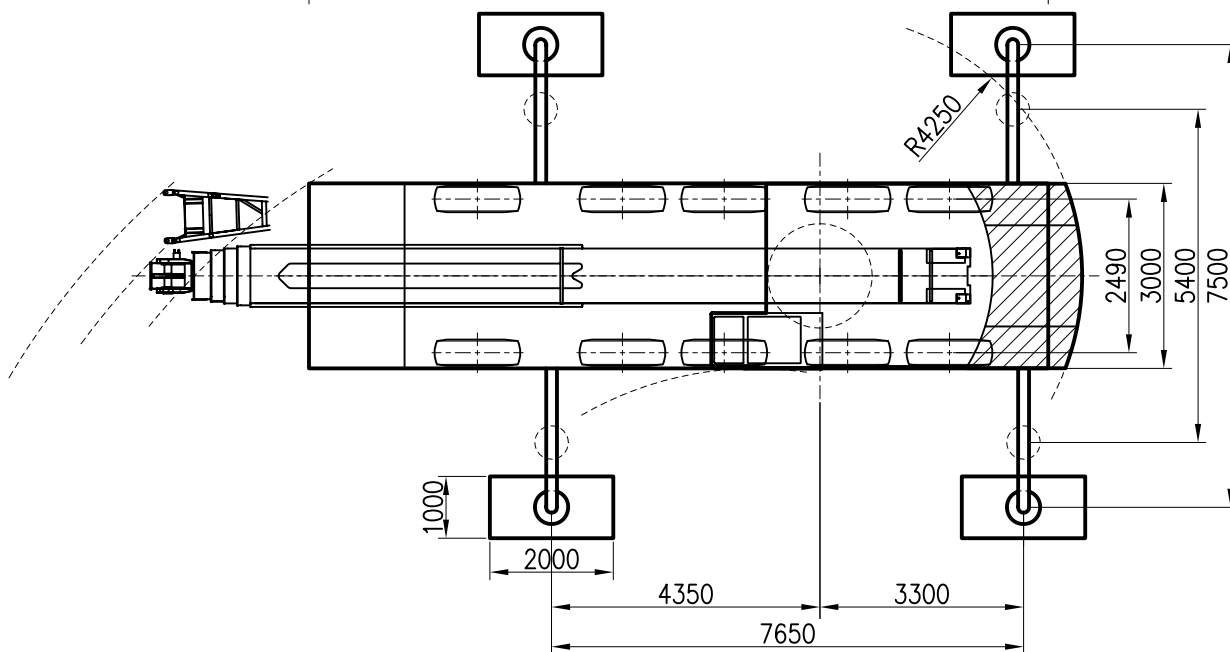
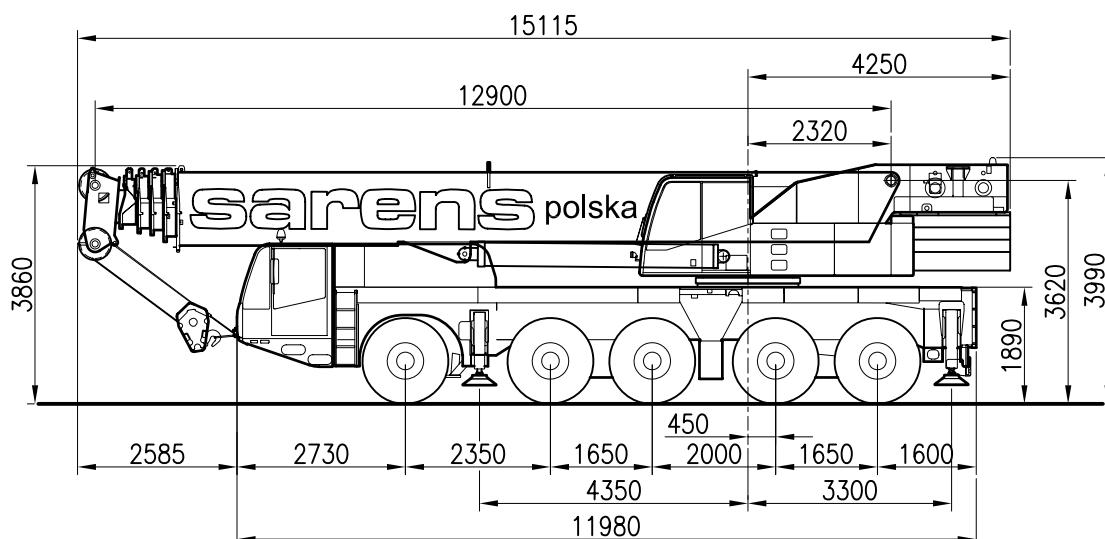


sarens
polska

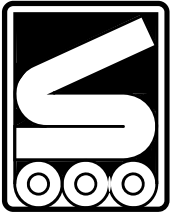
DEMAG AC120

120 TON

1/125



Nacisk na osie: 5x 12t (≡ 5.6t)
Ciężar żurawia: 60t (≡ 5.6t)
Opony: 14.00 R25

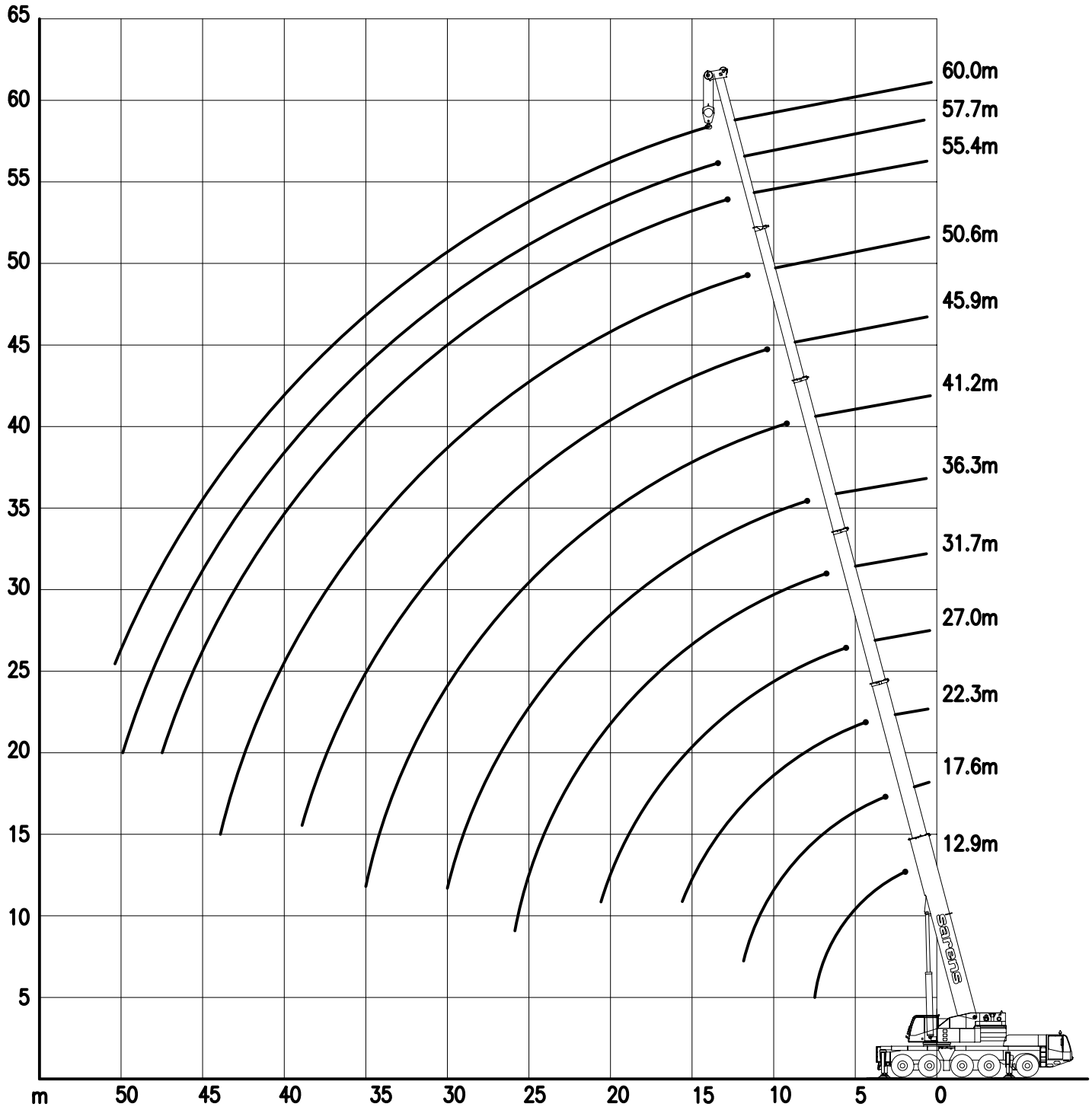


DEMAG AC120

120TON

UDŹWIGI
SKALA 1/400

KONFIGURACJA: Ha





DEMAG AC120

120TON

UDŹWIGI

38t		7.65 X 7.50 m KONFIGURACJA: Ha 360° 75%													
Promień pracy		Długość wysięgnika hydraulicznego												Promień pracy	
m	m	12.9	17.6	22.3	27.0	31.7	36.3	41.2	45.9	50.6	55.4	57.7	60.0	m	m
		t	t	t	t	t	t	t	t	t	t	t	t		
3	120.0 ¹⁾													3	3
3	111.7	-												3	3
3.5	102.7	70.0	-											3.5	3.5
4	94.7	70.0	70.0	-										4	4
4.5	87.4	70.0	70.0	51.0	-									4.5	4.5
5	81.0	70.0	69.9	48.0	40.0	-								5	5
6	70.3	69.8	65.2	45.0	40.0	30.0	-							6	6
7	59.9	59.6	58.6	41.3	40.0	30.0	-							7	7
8	52.1	51.7	50.6	40.0	36.9	28.5	23.0	-						8	8
9	45.3	44.9	43.9	40.0	34.0	26.9	22.3	19.5	-					9	9
10	38.0	39.6	38.5	39.2	31.5	25.4	21.8	19.1	14.0	-				10	10
12	-	31.6	32.1	31.2	27.0	25.0	20.6	18.2	13.8	11.0	-			12	12
14	-	24.8	25.4	24.3	23.4	22.0	18.5	16.6	12.9	10.7	9.4	8.0		14	14
16	-	-	20.4	19.8	20.9	19.0	16.2	14.8	12.0	10.4	9.1	7.7		16	16
18	-	-	16.8	17.5	17.2	16.4	14.4	13.4	11.1	10.0	8.8	7.3		18	18
20	-	-	-	14.7	14.5	14.5	13.0	12.2	10.3	9.5	8.4	6.9		20	20
22	-	-	-	12.5	12.3	12.4	11.7	11.1	9.6	8.9	8.0	6.6		22	22
24	-	-	-	-	10.6	10.6	10.6	10.0	8.9	8.3	7.5	6.2		24	24
26	-	-	-	-	9.1	9.2	9.4	8.9	8.2	7.6	7.1	5.9		26	26
28	-	-	-	-	7.8	7.9	8.1	8.1	7.6	7.0	6.6	5.6		28	28
30	-	-	-	-	-	6.8	7.0	7.0	6.8	6.4	6.1	5.4		30	30
32	-	-	-	-	-	5.9	6.1	6.1	5.9	5.9	5.7	5.1		32	32
34	-	-	-	-	-	-	5.7	5.2	5.5	5.1	5.2	4.9		34	34
36	-	-	-	-	-	-	5.3	4.9	5.0	4.4	4.4	4.5		36	36
38	-	-	-	-	-	-	-	4.6	4.4	4.1	3.8	3.9		38	38
40	-	-	-	-	-	-	-	4.3	3.8	3.8	3.2	3.3		40	40
42	-	-	-	-	-	-	-	4.0	3.3	3.4	2.7	2.8		42	42
44	-	-	-	-	-	-	-	-	2.8	2.9	2.3	2.4		44	44
46	-	-	-	-	-	-	-	-	2.4	2.5	1.8	2.0		46	46
48	-	-	-	-	-	-	-	-	-	2.1	1.5	1.6		48	48
50	-	-	-	-	-	-	-	-	-	1.8	1.1	1.2		50	50
52	-	-	-	-	-	-	-	-	-	-	0.8	0.9		52	52

28t		7.65 X 7.50 m KONFIGURACJA: Ha 360° 75%													
Promień pracy		Długość wysięgnika hydraulicznego												Promień pracy	
m	m	12.9	17.6	22.3	27.0	31.7	36.3	41.2	45.9	50.6	55.4	57.7	60.0	m	m
		t	t	t	t	t	t	t	t	t	t	t	t		
3	120.0 ¹⁾													3	3
3	111.4	-												3	3
3.5	101.8	70.0	-											3.5	3.5
4	93.4	70.0	70.0	-										4	4
4.5	86.2	70.0	70.0	51.0	-									4.5	4.5
5	80.0	70.0	69.9	48.0	40.0	-								5	5
6	66.7	66.4	65.2	45.0	40.0	30.0	-							6	6
7	56.5	56.1	55.0	41.3	40.0	30.0	-							7	7
8	48.2	47.9	46.8	40.0	36.9	28.5	23.0	-						8	8
9	41.9	41.5	40.5	40.0	34.0	26.9	22.3	19.5	-					9	9
10	36.3	35.7	36.4	35.2	31.5	25.4	21.8	19.1	14.0	-				10	10
12	-	26.0	26.6	25.5	25.3	25.0	20.6	18.2	13.8	11.0	-			12	12
14	-	20.0	20.5	21.2	21.0	20.1	18.5	16.6	12.9	10.7	9.4	8.0		14	14
16	-	-	16.3	17.0	16.8	16.9	16.2	14.8	12.0	10.4	9.1	7.7		16	16
18	-	-	13.3	13.9	13.7	13.8	13.2	13.4	11.1	10.0	8.8	7.3		18	18
20	-	-	-	11.6	11.3	11.5	11.7	11.1	10.3	9.5	8.4	6.9		20	20
22	-	-	-	9.7	9.4	9.6	9.8	9.8	9.6	8.9	8.0	6.6		22	22
24	-	-	-	-	7.8	7.9	8.2	8.2	8.0	8.1	7.5	6.2		24	24
26	-	-	-	-	6.5	6.6	7.3	6.9	7.1	6.7	6.8	5.9		26	26
28	-	-	-	-	5.5	5.5	6.8	6.3	6.3	5.6	5.7	5.6		28	28
30	-	-	-	-	-	4.6	5.9	5.9	5.3	5.2	4.7	4.9		30	30
32	-	-	-	-	-	3.8	5.1	5.2	4.5	4.6	3.9	4.0		32	32
34	-	-	-	-	-	-	4.4	4.5	3.8	3.9	3.2	3.3		34	34
36	-	-	-	-	-	-	3.8	3.9	3.2	3.3	2.6	2.7		36	36
38	-	-	-	-	-	-	-	3.3	2.7	2.8	2.1	2.2		38	38
40	-	-	-	-	-	-	-	2.8	2.2	2.3	1.6	1.7		40	40
42	-	-	-	-	-	-	-	2.4	1.8	1.9	1.2	1.3		42	42
44	-	-	-	-	-	-	-	-	1.4	1.5	0.8	0.9		44	44
46	-	-	-	-	-	-	-	-	1.0	1.1	-	-		46	46
48	-	-	-	-	-	-	-	-	-	0.8	-	-		48	48



DEMAG AC120

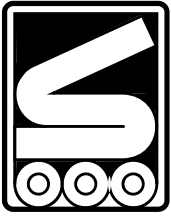
120TON

UDŹWIGI

16.8t		7.65 X 7.50 m KONFIGURACJA: Ha 360° 75%													
Promień pracy		Długość wysięgnika hydraulicznego											Promień pracy		
m	m	12.9	17.6	22.3	27.0	31.7	36.3	41.2	45.9	50.6	55.4	57.7	60.0	m	m
3	110.2	-	-	-	-	-	-	-	-	-	-	-	-	3	3
3	100.3	70.0	-	-	-	-	-	-	-	-	-	-	-	3.5	3.5
3.5	92.0	70.0	70.0	-	-	-	-	-	-	-	-	-	-	4	4
4	84.0	70.0	70.0	51.0	-	-	-	-	-	-	-	-	-	4.5	4.5
4.5	75.6	70.0	69.9	48.0	40.0	-	-	-	-	-	-	-	-	5	5
5	62.1	61.7	60.5	45.0	40.0	30.0	-	-	-	-	-	-	-	6	6
6	51.7	51.4	47.8	41.3	40.0	30.0	-	-	-	-	-	-	-	7	7
7	42.4	41.9	40.0	37.4	34.9	28.5	23.0	-	-	-	-	-	-	8	8
8	33.9	33.4	34.1	31.5	29.6	26.9	22.3	19.5	-	-	-	-	-	9	9
9	27.9	27.4	28.1	26.8	25.4	25.0	21.8	19.1	14.0	-	-	-	-	10	10
10	-	19.6	20.2	21.0	20.8	20.0	18.6	18.2	13.8	11.0	-	-	-	12	12
12	-	14.5	15.1	15.8	15.6	15.8	15.7	14.5	12.9	10.7	9.4	8.0	-	14	14
14	-	-	11.6	12.3	12.1	12.2	12.5	12.4	11.7	10.4	9.1	7.7	-	16	16
16	-	-	9.1	11.2	9.6	9.7	9.9	10.0	9.6	9.4	8.8	7.3	-	18	18
18	-	-	-	9.6	8.7	7.8	9.1	8.3	8.5	7.7	7.7	6.9	-	20	20
20	-	-	-	8.1	8.1	7.2	7.5	7.6	6.9	6.7	6.3	6.4	-	22	22
22	-	-	-	-	7.1	6.6	6.2	6.3	6.1	5.7	5.0	5.1	-	24	24
24	-	-	-	-	6.0	6.1	5.3	5.7	5.4	4.7	3.9	4.1	-	26	26
26	-	-	-	-	5.1	5.3	4.8	4.9	4.5	3.8	3.1	3.2	-	28	28
28	-	-	-	-	-	4.6	4.4	4.1	3.8	3.0	2.3	2.4	-	30	30
30	-	-	-	-	-	3.9	4.0	3.5	3.1	2.4	1.7	1.8	-	32	32
32	-	-	-	-	-	-	3.5	2.9	2.6	1.8	1.1	1.2	-	34	34
34	-	-	-	-	-	-	3.0	2.4	2.1	1.3	-	-	-	36	36
36	-	-	-	-	-	-	-	2.0	1.6	0.9	-	-	-	38	38
38	-	-	-	-	-	-	-	-	1.6	1.2	-	-	-	40	40
40	-	-	-	-	-	-	-	-	1.3	0.9	-	-	-		

5.6t		7.65 X 7.50 m KONFIGURACJA: Ha 360° 75%													
Promień pracy		Długość wysięgnika hydraulicznego											Promień pracy		
m	m	12.9	17.6	22.3	27.0	31.7	36.3	41.2	45.9	50.6	55.4	57.7	60.0	m	m
3	108.5	-	-	-	-	-	-	-	-	-	-	-	-	3	3
3	98.8	70.0	-	-	-	-	-	-	-	-	-	-	-	3.5	3.5
3.5	88.7	70.0	70.0	-	-	-	-	-	-	-	-	-	-	4	4
4	79.1	70.0	70.0	51.0	-	-	-	-	-	-	-	-	-	4.5	4.5
4.5	70.2	69.3	59.2	48.0	40.0	-	-	-	-	-	-	-	-	5	5
5	56.6	50.7	43.9	40.0	37.6	30.0	-	-	-	-	-	-	-	6	6
6	40.6	39.3	36.9	32.3	29.6	27.3	-	-	-	-	-	-	-	7	7
7	30.7	30.1	29.6	25.9	23.8	23.4	22.3	-	-	-	-	-	-	8	8
8	23.8	23.3	24.1	23.7	22.0	20.9	20.1	18.3	-	-	-	-	-	9	9
9	19.0	18.5	19.2	20.0	18.6	17.8	17.2	16.4	14.0	-	-	-	-	10	10
10	-	12.4	13.1	15.0	13.7	13.2	13.4	12.3	11.6	11.0	-	-	-	12	12
12	-	8.4	9.1	12.1	11.5	10.4	11.3	10.7	9.6	8.5	8.2	8.0	-	14	14
14	-	-	6.3	9.3	9.6	9.4	8.7	8.7	8.2	7.3	6.3	6.3	-	16	16
16	-	-	4.4	7.3	7.6	7.8	7.4	7.4	6.9	5.8	4.8	4.8	-	18	18
18	-	-	-	5.7	6.0	6.2	6.4	5.8	5.4	4.4	3.5	3.5	-	20	20
20	-	-	-	4.5	4.8	5.0	5.1	4.6	4.2	3.3	2.4	2.4	-	22	22
22	-	-	-	-	3.8	4.0	4.1	3.6	3.2	2.4	1.5	1.5	-	24	24
24	-	-	-	-	3.0	3.2	3.3	2.8	2.4	1.6	-	-	-	26	26
26	-	-	-	-	2.3	2.5	2.6	2.1	1.7	1.0	-	-	-	28	28
28	-	-	-	-	-	2.0	2.1	1.5	1.2	-	-	-	-	30	30
30	-	-	-	-	-	1.5	1.6	1.1	-	-	-	-	-	32	32
32	-	-	-	-	-	-	1.2	-	-	-	-	-	-		

(1) Udźwig na tył żurawia

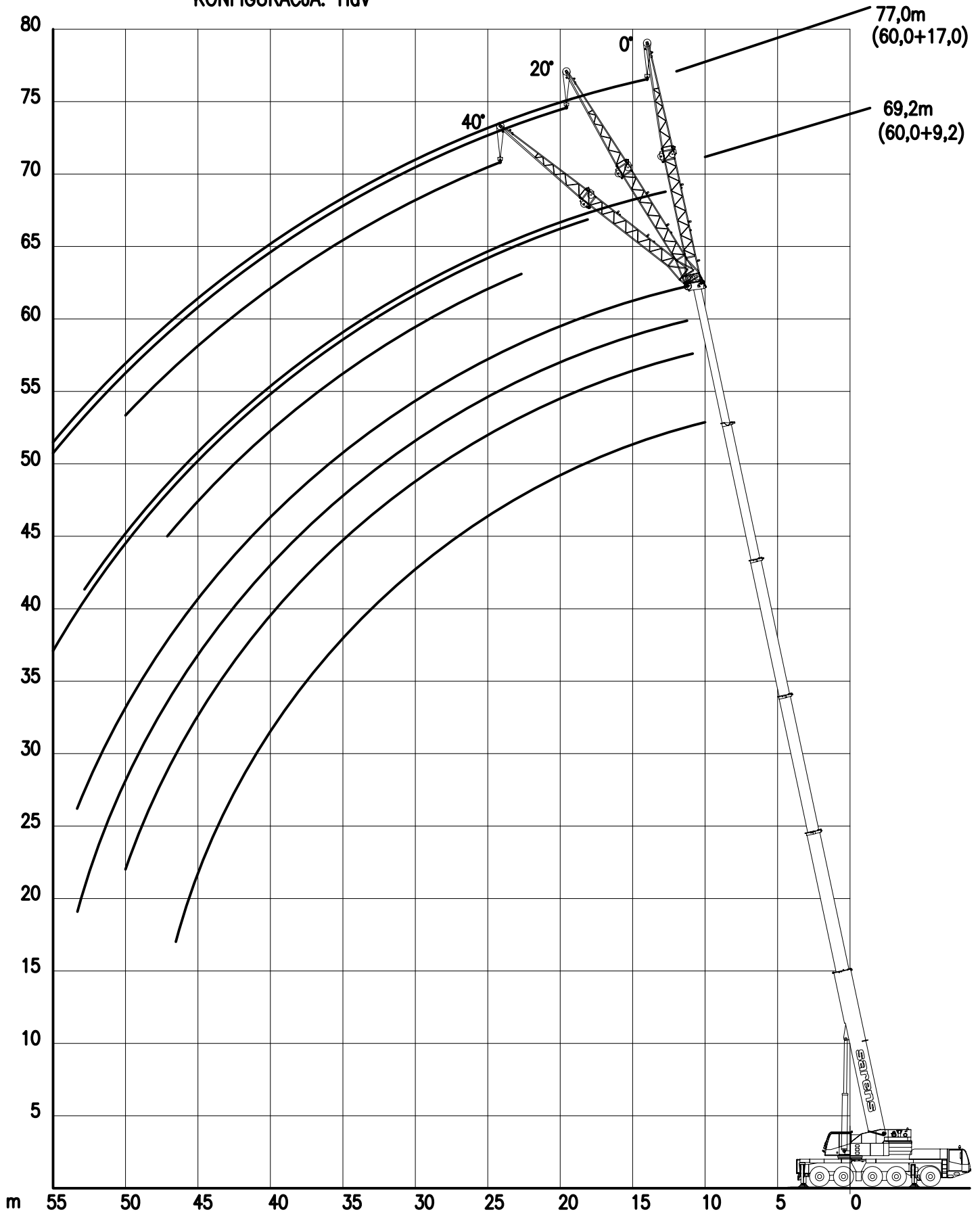


DEMAG AC120

120TON

UDŹWIGI
SKALA 1/400

KONFIGURACJA: HaV





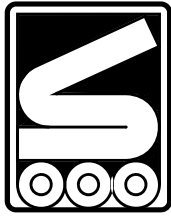
DEMAG AC120

120TON

UDŹWIGI

28t		7.65 X 7.5 m KONFIGURACJA: HaV 360° 75%						Długość wysięgnika hydraulicznego								
		50.6m						57.7m								
Promień pracy	m	9.2m			17m			9.2m			17m			Promień pracy	m	
		0°	20°	40°	0°	20°	40°	0°	20°	40°	0°	20°	40°			
		t	t	t	t	t	t	t	t	t	t	t	t			
14	8.2													14		
16	7.7	-	-	-	3.8									16		
18	7.2	5.4	4.7		3.6	-				2.9				18		
20	6.8	5.4	4.7		3.5	2.7				2.9				20		
22	6.4	5.3	4.6		3.4	2.7	-			4.9	4.3	4.2	2.8	22		
24	6.0	5.2	4.5		3.3	2.6	2.3			4.7	4.3	4.2	2.7	2.3	24	
26	5.7	5.0	4.4		3.1	2.5	2.3			4.5	4.1	4.1	2.7	2.2	-	26
28	5.4	4.9	4.3		3.0	2.4	2.3			4.3	4.0	3.9	2.6	2.2	2.1	28
30	5.0	4.7	4.2		2.8	2.3	2.3			4.1	3.8	3.8	2.5	2.1	2.1	30
32	4.2	4.5	4.1		2.7	2.2	2.2			3.9	3.6	3.7	2.4	2.0	2.1	32
34	3.5	4.0	4.0		2.6	2.2	2.2			3.6	3.5	3.5	2.3	2.0	2.0	34
36	3.3	3.3	3.6		2.5	2.1	2.1			2.9	3.3	3.3	2.3	1.9	2.0	36
38	3.1	2.7	2.9		2.4	2.1	2.1			2.4	2.8	3.1	2.2	1.9	1.9	38
40	2.9	2.2	2.4		2.3	2.0	2.0			1.9	2.3	2.5	2.1	1.9	1.9	40
42	2.5	1.7	1.9		1.8	2.0	2.0			1.5	1.8	2.0	1.8	1.8	1.9	42
44	2.1	1.3	-		1.8	1.9	1.9			1.1	1.4	1.6	1.4	1.8	1.8	44
46	1.7	0.9			1.7	1.6	1.9			0.7	1.0	1.2	1.1	1.6	1.8	46
48	1.4	-			1.6	1.2	1.5			-	-	-	0.7	1.2	1.6	48
50	1.1	-			1.4	0.9	1.1			-	-	-	-	0.9	1.2	50
52	0.8	-			1.1	-	-			-	-	-	-	-	0.9	52
54	-	-			0.9	-	-			-	-	-	-	-	-	54
56	-	-			-	-	-			-	-	-	-	-	-	56

55.4m		Długość wysięgnika kratowego						60m						Długość wysięgnika kratowego				
		9.2m			17m			9.2m			17m							
Promień pracy	m	0°	20°	40°	0°	20°	40°	0°	20°	40°	0°	20°	40°	0°	20°	40°	Promień pracy	m
		t	t	t	t	t	t	t	t	t	t	t	t	t	t	t		
14	6.6																14	
16	6.3				3.4												16	
18	6.0	-	-	-	3.3								2.7				18	
20	5.6	4.8	4.5		3.1	-							2.6				20	
22	5.3	4.8	4.5		3.0	2.4							2.6	-			22	
24	5.0	4.6	4.4		2.9	2.4	-						2.5	1.9			24	
26	4.8	4.4	4.3		2.8	2.3	2.2						2.5	1.9	-		26	
28	4.6	4.3	4.1		2.7	2.3	2.2						2.4	1.9	2.0		28	
30	4.4	4.1	4.0		2.6	2.2	2.2						2.3	1.9	2.0		30	
32	4.2	3.9	3.9		2.5	2.1	2.1						2.2	1.9	2.0		32	
34	3.6	3.8	3.7		2.4	2.1	2.1						2.1	1.9	1.9		34	
36	2.9	3.4	3.6		2.4	2.0	2.0						2.1	1.9	1.9		36	
38	2.4	2.8	3.0		2.3	2.0	2.0						2.0	1.8	1.9		38	
40	1.9	2.3	2.5		2.2	1.9	2.0						1.9	1.8	1.9		40	
42	1.5	1.8	2.0		1.8	1.9	1.9						1.8	1.8	1.8		42	
44	1.1	1.4	1.5		1.4	1.8	1.9						1.5	1.7	1.8		44	
46	0.7	1.0	-		1.1	1.6	1.8						1.1	1.7	1.7		46	
48	-	-			0.8	1.2	1.6						0.8	1.3	1.6		48	
50					-	0.9	1.2						-	0.9	1.3		50	
52						-	0.8							-	0.9		52	
54							-								-		54	



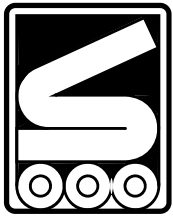
DEMAG AC120

120TON

UDŹWIGI

16.8t		7.65 X 7.5 m		KONFIGURACJA: HaV		360°		75%					
		Długość wysięgnika hydraulicznego											
Promień pracy	50.6m						57.7m						Promień pracy
	Długość wysięgnika kratowego						Długość wysięgnika kratowego						
	9.2m			17m			9.2m			17m			
m	0°	20°	40°	0°	20°	40°	0°	20°	40°	0°	20°	40°	m
	t	t	t	t	t	t	t	t	t	t	t	t	
14	8.2												14
16	7.7	-	-		3.8								16
18	7.2	5.4	4.7		3.6	-			2.9				18
20	6.8	5.4	4.7		3.5	2.7			2.9				20
22	6.4	5.3	4.6		3.4	2.7			2.8	-			22
24	5.3	5.2	4.5		3.3	2.6	2.3		2.7	2.3			24
26	4.4	5.0	4.4		3.1	2.5	2.3		2.7	2.2	-		26
28	4.1	4.0	4.3		3.0	2.4	2.3		2.6	2.2	2.1		28
30	3.1	3.2	3.6		2.8	2.3	2.3		2.7	3.3	3.7		30
32	2.5	2.5	2.8		2.4	2.2	2.2		2.0	2.6	3.0		32
34	2.0	1.9	2.2		2.1	2.2	2.2		1.5	2.0	2.3		34
36	1.6	1.3	1.6		2.1	2.1	2.1		1.0	1.4	1.7		36
38	1.2	0.8	1.1		1.9	1.7	2.1		-	0.9	1.2		38
40	0.8	-	-		1.5	1.2	1.7			-	0.8		40
42	-	-	-		1.1	0.8	1.2				-		42
44					0.8	-	0.8				-		44
46					-	-	-				-		46

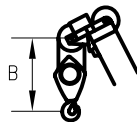
Promień pracy	55.4m						60m						Promień pracy
	Długość wysięgnika kratowego						Długość wysięgnika kratowego						
	9.2m			17m			9.2m			17m			
m	0°	20°	40°	0°	20°	40°	0°	20°	40°	0°	20°	40°	m
	t	t	t	t	t	t	t	t	t	t	t	t	
14	6.6												14
16	6.3				3.4								16
18	6.0	-	-		3.3				2.7				18
20	5.6	4.8	4.5		3.1	-			2.6				20
22	5.3	4.8	4.5		3.0	2.4			2.6	-			22
24	5.0	4.6	4.4		2.9	2.4	-		2.5	1.9			24
26	4.3	4.4	4.3		2.8	2.3	2.2		2.5	1.9	-		26
28	3.4	4.1	4.1		2.7	2.3	2.2		2.4	1.9	2.0		28
30	2.7	3.3	3.7		2.6	2.2	2.2		2.8	3.3	3.5		30
32	2.0	2.6	3.0		2.4	2.1	2.1		2.1	2.6	3.0		32
34	1.5	1.9	2.3		1.9	2.1	2.1		1.5	2.0	2.4		34
36	1.0	1.4	1.7		1.4	2.0	2.0		1.0	1.5	1.8		36
38	-	0.9	1.2		0.9	1.7	2.0		-	1.0	1.3		38
40		-	0.7		-	1.2	1.7			-	0.8		40
42						0.7	1.3				-		42
44						-	0.9				-		44



PRĘDKOŚCI ROBOCZE

Urządzenia	Prędkości	Średnica liny	Wytrzymałość pasma liny	Długość liny
Główna wciągarka	60 m/min	21 mm	72 kN	240 m
Pomocnicza wciągarka	60 m/min	21 mm	72 kN	240 m
Prędkości ruchu	0-74/80 km/h			
Podnoszenie wysięgnka -1,5° - 80,5°	55 s			
Teleskopowanie 10,1 m - 60,0 m	190 s			

ZBLOCZE HAKOWE



Udźwig	Liczba krążków	Liczba pasm liny	Ciężar zblocza	"B"
125 t	9	18	1300 kg	2.0 m
80 t	5	11	930 kg	1.9 m
63 t	3	7	700 kg	1.9 m
32 t	1	3	550 kg	1.8 m
8 t	Bąbka	1	250 kg	1.7 m